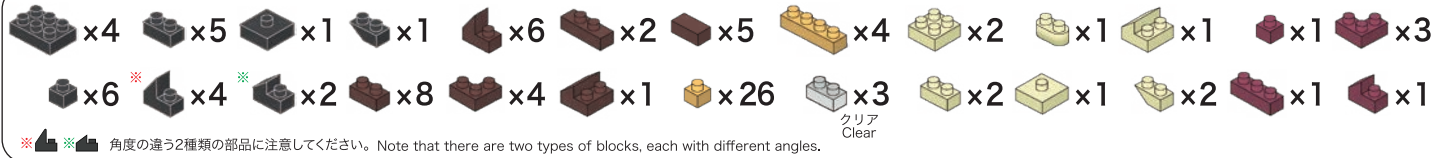
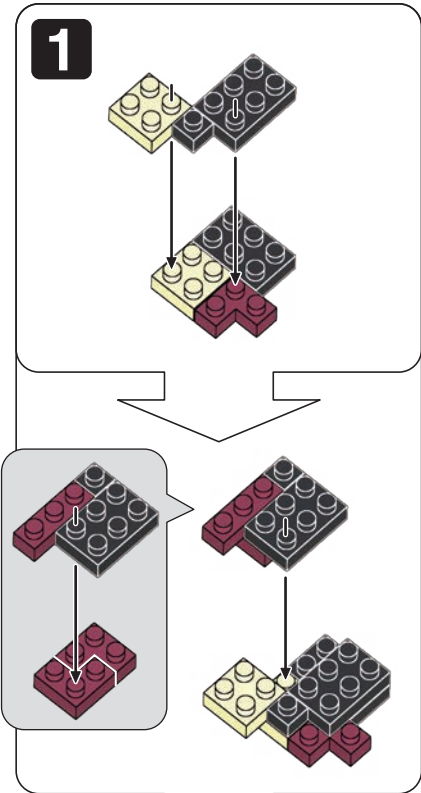
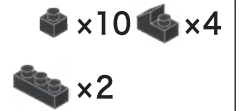


※別売りの「NB-019 ナノブロック専用ピンセット」や「NB-020 ナノブロックパッド」を使うと組み立て、取りはずしに便利です。Use "NB-019 nanoblock® Tweezers" and "NB-020 nanoblock® Pad" (each sold separately) for an easy way to assemble and disassemble blocks.

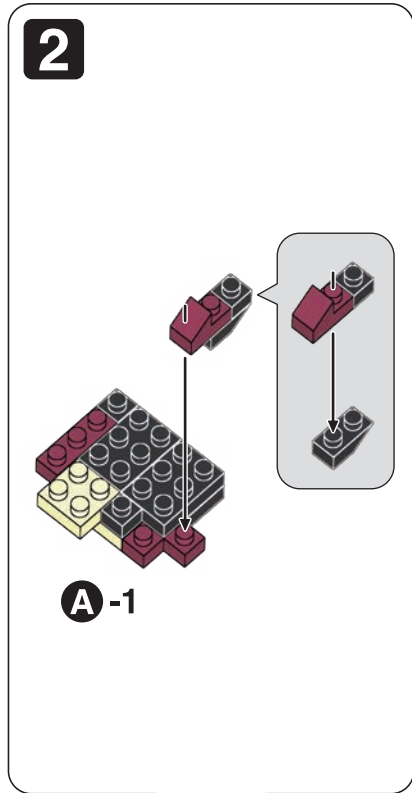


※ 角度の違う2種類の部品に注意してください。Note that there are two types of blocks, each with different angles.

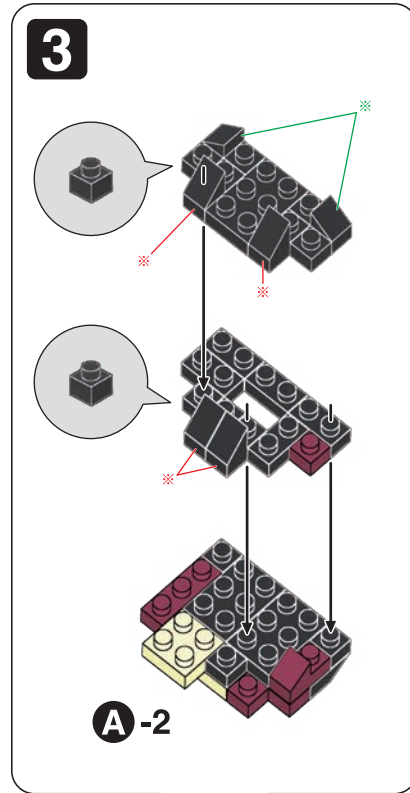
「ロードバイク」の組み立て用に追加の部品が入っています。  
組立説明書は下記URLよりダウンロードしてください。  
Additional parts are included for assembling "ROAD BIKE"  
Please download the assembly instructions from the URL below.  
[https://www.kawada-toys.com/nanoblock/nbmc66\\_7.pdf](https://www.kawada-toys.com/nanoblock/nbmc66_7.pdf)



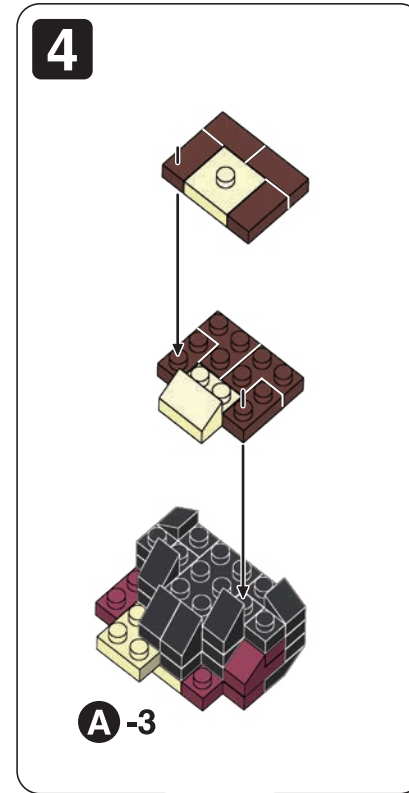
A-1



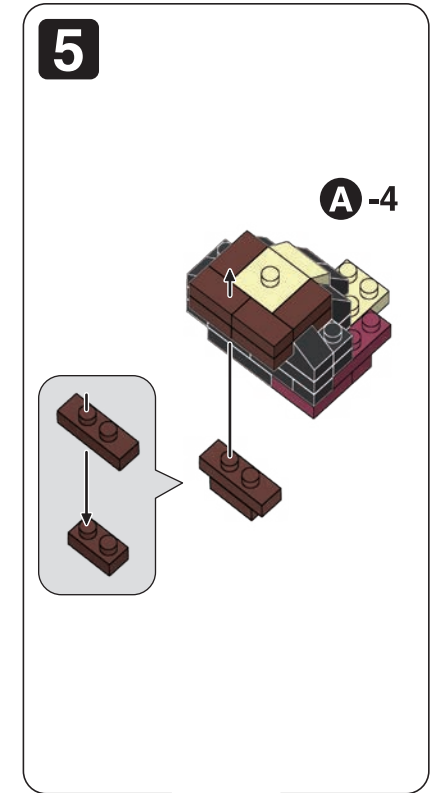
A-2



A-3



A-4



A-5

**6**

**7**

クリア  
Clear

**B-1**

**8**

**9**

**B-2**

**C**

**10**

**D**

**B-1**

**B-2**

**A-5**

**x2**

**x13**

**C**

**完成!**  
Finished!

**B-1**

**B-2**

**A-5**

**C**

**D**

**D**

※部品は多めに入っております  
Extra blocks included